



REV: 10182010

ITE / EMBEDDED POWER SUPPLY

PRODUCT FEATURES:

- Constant Current and Constant Voltage Options
- UL 8750, 935, 1310 (Class 2)
- Wide AC Input (100 ~ 277VAC \pm 10%)
- Standard DC Outputs: 12V to 48V
- Active PFC for EN61000-3-2 Class D Compliance
- Free Air Convection Cooling
- Short Circuit Protection
- IP-65 Rated for Indoor/Outdoor Use
- Suitable for LED/Lighting and Sign Applications



INPUT SPECIFICATIONS:

VOLTAGE	Universal AC Input (100 ~ 277VAC)
FREQUENCY	47~63 Hz
INRUSH	30A @ 230VAC Full Load (Max Cold Start)
CURRENT	1A @ 115VAC (Max Continuous)
PROTECTION	Single 2.0A Fuse / 300VAC
LEAKAGE	<0.5mA @ 264VAC
HOLD-UP	\geq 16ms @ (230 VAC, Full Load)
EFFICIENCY	75% (typical @ 230VAC, Full Load)
HARMONICS	EN61000-3-2 Class D Compliant (>95 PF)

OUTPUT SPECIFICATIONS:

OUTPUT	See Table for Standard Output Voltages
MINIMUM LOAD	None
LINE REGULATION	\pm 1% Max over entire input range
LOAD REGULATION	\pm 3% Maximum
RIPPLE	\pm 3% (BW = 20 MHz)
SETPOINT ACCURACY	\pm 1%
EXCURSION	\pm 5% Max for 25% Step Load
RECOVERY	100ms max
OVER-CURRENT	105~150% (Auto-Recovery)
OVER VOLTAGE PROTECTION	110~150% (Hiccup Mode)

GENERAL SPECIFICATIONS:

OPERATING TEMPERATURE	-20°C to +60°C
STORAGE TEMPERATURE	-40°C to +85°C
COOLING	Convection Cooled
HUMIDITY	5% - 95% (non-condensing)
VIBRATION	10-55Hz, 2G, 3Min Period, 60 min each (3 axes)
SHOCK	20G Peak Acceleration
RELIABILITY	>100K Hours (Per Mil STD 217F)
SIZE PLASTIC	7.13" x 2.34" x 1.43" (L x W x H)
SIZE METAL	7.36" x 2.28" x 1.57" (L x W x H)

EMISSIONS:

EMISSIONS	EN55022 Level B-Conducted
ELECTROSTATIC DISCHARGE	EN61000-4-2, 4KV Contact / 8KV Air
RADIATED SUSCEPTIBILITY	EN61000-4-3, 26MHz-1000MHz, 10V/m, 80%AM
EFT / BURSTS	EN61000-4-4, 2KV
SURGES	EN61000-4-5, 2KV Earth, 1KV Line-Line
CONDUCTED IMMUNITY	EN61000-4-6, 0.15KHz-800MHz, 10V, 80%AM
VOLTAGE DIPS	EN61000-4-10, 95% Dip & 10ms, 30% Dip & 500ms
VOLTAGE INTERRUPTIONS	EN61000-4-11, 95% reduction, 5ms
FLUCTUATIONS & FLICKER	EN61000-3-3

SAFETY STANDARDS:

UL / CUL	1310, 935, and 8750
CE MARK	Low Voltage Directive

OUTPUT MODELS:

Output Models:	OUTPUT		
	VDC	A (Min)	A (Max)
LED-60-12	12V	0.0A	5.0A
LED-60-18	18V	0.0A	3.33A
LED-60-24	24V	0.0A	2.5A
LED-60-30	30V	0.0A	2.0A
LED-60-36	36V	0.0A	1.67A
LED-60-48	48V	0.0A	1.25A

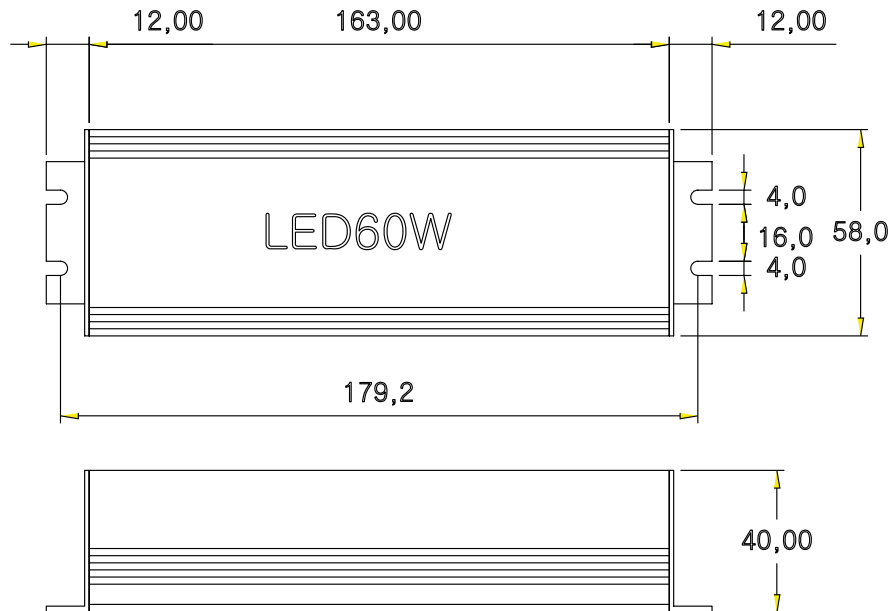
NOTE:

There are two different Output options (Constant Current or Constant Voltage) and there are two different Case options (Plastic or Metal):

- To order the Constant Current version, add the suffix C to the end of the part number
- To order the Constant Voltage version, add the suffix V to the end of the part number
- To order the Plastic Case, add the suffix P to the end of the part number
- To order the Metal Case, add the suffix M to the end of the part number

For example, LED-60-48CP is a 48VDC output, Constant Current version, in a Plastic C

OUTLINE DRAWING:

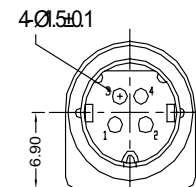


Standard Connections:

- Input: 500mm 3-Wire Tinned Leads, 18AWG
 - AC-L = RED
 - AC-N = BLACK
 - FG = Green
- Output: 500mm 2-Wire Tinned Leads, 20 AWG
 - DC+ = RED
 - DC- = BLACK

Optional Fixed Connections:

- Input: 1800mm to USA 3-Prong Plug
- Output: 500mm to Kycon KPPX-4P



Pins 1,2: Vout(+)
Pins 3,4: GND

