

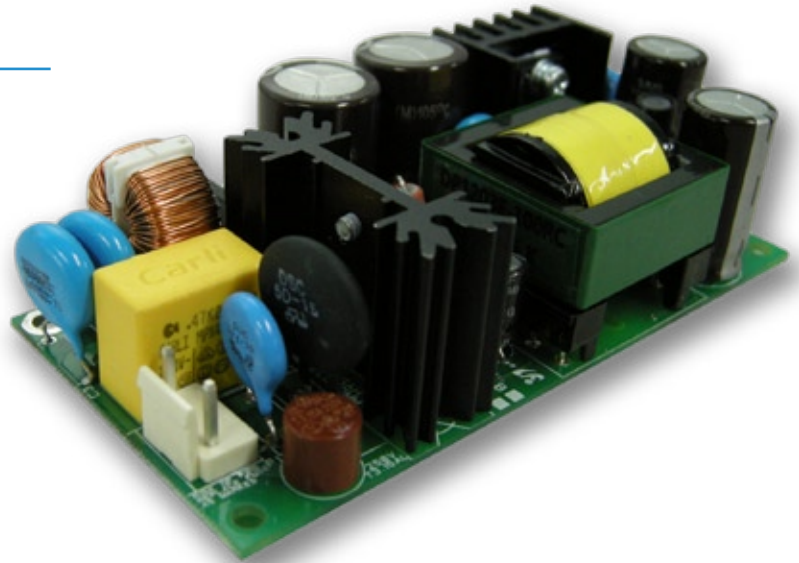


REV: 04112011

ITE / EMBEDDED POWER SUPPLY

PRODUCT FEATURES:

- **Universal AC Input**
- **Single Outputs Available**
- **Meets FCC & EN Class B EMI**
- **World Wide Safety Approval**
- **Compact Size 1.72" x 3.72"**
- **Low Profile 1.25"**
- **Safety Certifications Pending, for Full Product Family**



INPUT SPECIFICATIONS:

VOLTAGE	Universal AC Input (90 ~ 264VAC)
FREQUENCY	47 ~ 63 Hz
INRUSH	≤ 12A @ 230VAC Full Load
CURRENT	0.75A @ 230VAC (Max Continuous)
PROTECTION	Single 3.1A Fuse / 250V Rated
LEAKAGE	≤ .75mA Max @ 264VAC
HOLD-UP	≥20ms minimum (230VAC, Full Load)
EFFICIENCY	12V Output: 80% (typical) @ 230VAC Full Load 24V Output: 84% (typical) @ 230VAC Full Load
HARMONICS	EN61000-3-2 Class D Compliant (>0.98PF)

OUTPUT SPECIFICATIONS:

OUTPUT VOLTAGE	See Output Table (page 2)
OUTPUT CURRENT	See Output Table (page 2)
LINE REGULATION	±1% max, across full input range
LOAD REGULATION	±1% max, across full load range
RIPPLE	120mV p-p, max (20MHz BW plus .1uF and 47uF)
SETPOINT ACCURACY	±1%
EXCURSION	±5% max, 25% Step Load
RECOVERY	100ms max
OVER-CURRENT	≥120% (Foldback, Auto-Recovery)
OV PROTECTION	110~125% (Recycle input to reset)

GENERAL SPECIFICATIONS:

OPERATING TEMPERATURE	-10°C ~ +65°C
STORAGE TEMPERATURE	-40°C ~ +85°C
OPERATING HUMIDITY	10% ~ 95% (non-condensing)
STORAGE HUMIDITY	5% ~ 95% (non-condensing)
COOLING	5CFM External Airflow
VIBRATION	10-55Hz, 2G, 3Min Period, / 60 min each (3 axes)
SHOCK	20G Peak Acceleration
RELIABILITY	>100K Hours (Per Mil STD 217F)
SIZE (INCHES)	1.72" x 3.72" x 1.25"

EMISSIONS:

EMISSIONS	-20°C to +65°C
ELECTROSTATIC DISCHARGE	-40°C to +85°C
RADIATED SUSCEPTIBILITY	10% ~ 95% (non-condensing)
EFT / BURSTS	5% ~ 95% (non-condensing)
SURGES	Intelligent Fan Cooled Rectifier Modules
CONDUCTED IMMUNITY	10-55Hz, 2G, 3Min Period, 60 min each (3 axes)
VOLTAGE DIPS	20G Peak Acceleration
VOLTAGE INTERRUPTIONS	>100K Hours (per MIL STD 217F)
FLUCTUATIONS & FLICKER	EN61000-3-3

SAFETY STANDARDS:

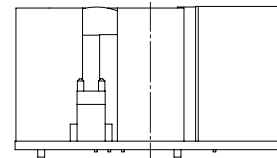
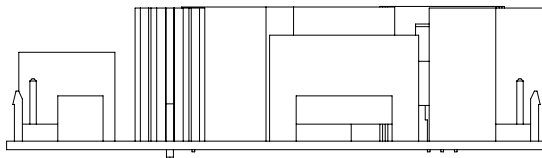
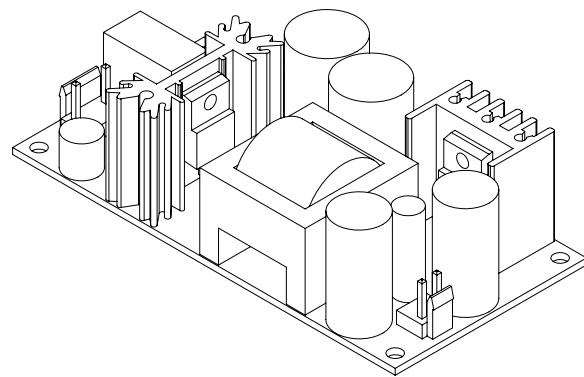
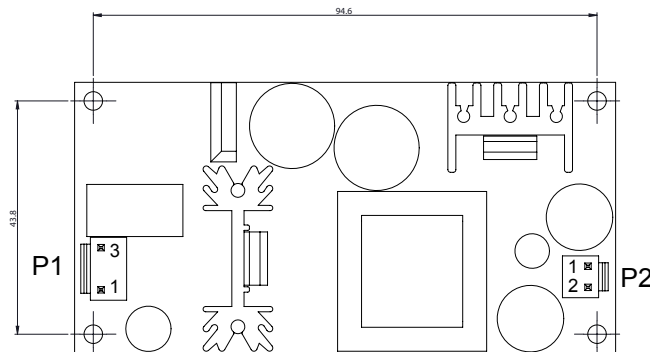
UL / CUL	60950-1
CE MARK	Low Voltage Directive



OUTPUT MODELS:

Output Models:	Output #1			Safety Certification
	VDC	Io (Min)	Io (Max)	
PSU-65-12	12V	0A	5.4A	Pending
PSU-65-24	24V	0A	2.7A	Pending

OUTLINE DRAWING:



Connector	Pin	Designation	YEONHO #
P1 (AC INPUT)	1	Line	YW396-03AV
	2	N.C	
	3	Neutral	
P2 (DC OUTPUT)	1	+Vout	YW396-02V
	2	GND	

